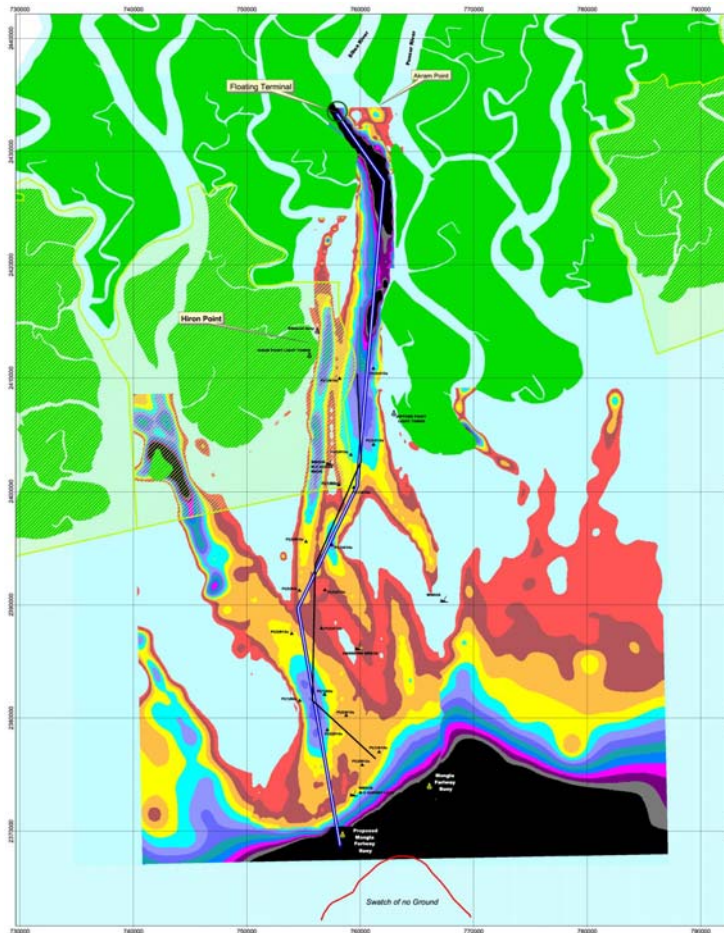


Phulbari Coal Project, channel improvement / dredging study



Proposed shipping channel from loading terminal to the Bay of Bengal

Asia Energy Corporation (Bangladesh) Pty Ltd is the proponent for the exploration of a coalmine at Phulbari, in the north east of Bangladesh and the shipment of the coal to the world market.

The Project consists of the transportation of the coal from the mine to a rail to barge terminal, barge it to a barge to ship terminal and ship it though an improved river channel to the Bay of Bengal and then to the market.

The study by DEMAS is to design a shipping channel through the Outer Bar in the Approach to the Pussur River to provide sufficient depth for a Panamax size coal ships to sail to the Bay of Bengal making use of the tide.

The design takes into consideration the sediment to be dredged, the tidal help when sailing through the 40 km long channel through the Outer Bar, with a change in tide during the sailing through the channel, the wave and current conditions, the speed of the ships and the tidal window that is to be used.

Upon completion of the design a working method was prepared, a dredge type selected and a dredge spread chosen. The selected dredge spread was then used to prepare a planning of the works and a cost estimate of the dredging and associated works. The associated works consist of supply and installation of navigational aids, shore beacons, tidal stations, pilot boats and detailed morphology studies to be carried out to assess the sedimentation.

Client

Asia Energy Corporation
(Bangladesh) Pty. Ltd.

Location

Bangladesh

Year 2005 - 2006

Services

- channel design
- dredge solutions
- dredge cost calculation
- project assistance

demas
dredging consultants bv

Herbarenerf 7
2743 HA Waddinxveen
The Netherlands

Tel +31 182 546798
Fax +31 182 546802

E-mail demasnl@demas.nl
Web www.demas.nl