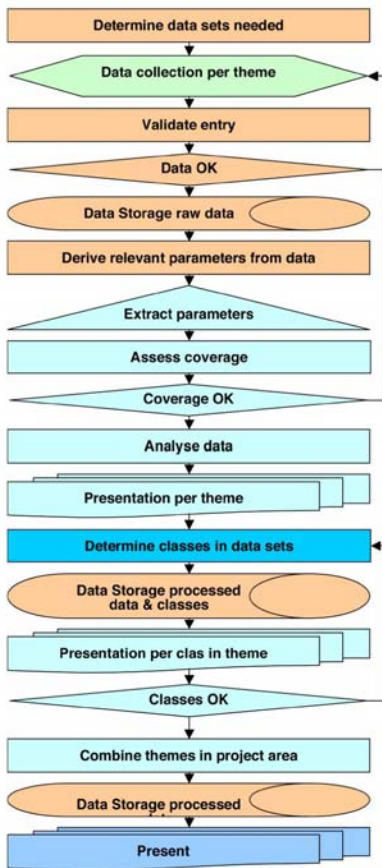
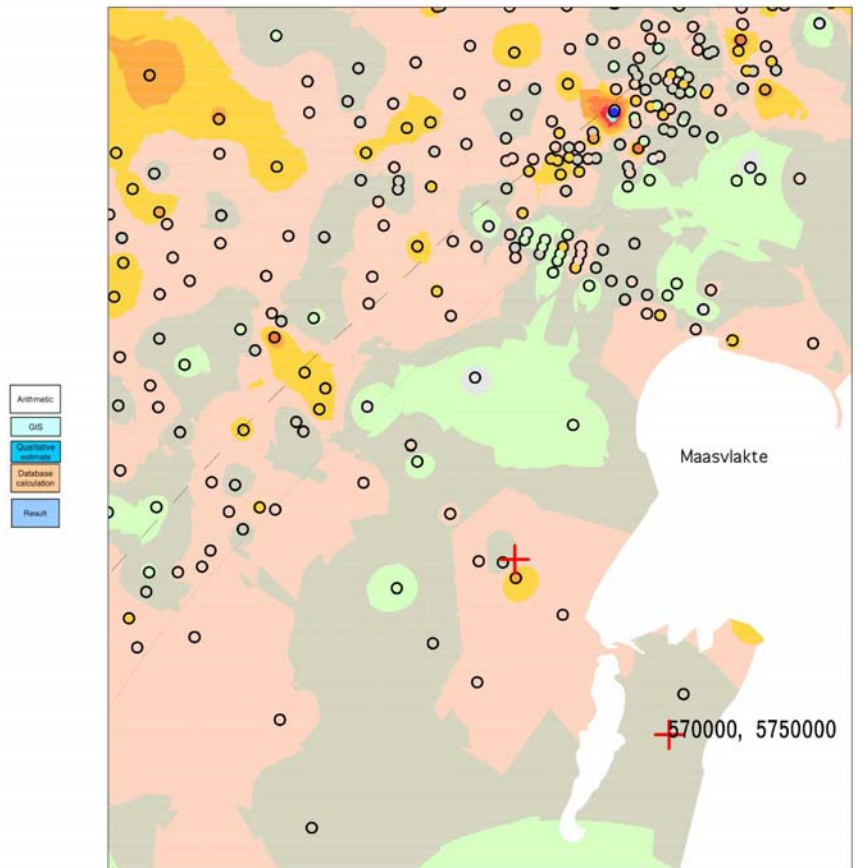


Inventory of sand borrow areas for the Maasvlakte 2



Project set-up diagram



Map theme in GIS

The Rotterdam Port Authority commissioned DEMAS dredging consultants bv to review and assess the marine borrow areas for the preparation of the Environmental Impact Assessment. The EIA is prepared for the supply of fill for the land reclamation for the extension of the port into the North Sea. The reclamation comprises a (nett) 1,000 ha industrial port development, Maasvlakte 2 and areas dedicated to wildlife development and recreation.

The selection of borrow areas will be determined by the quality of the sand, the execution costs for winning and reclaiming and the environmental impact of the execution of the dredging and the borrow pits created. The earmarked borrow areas have been investigated in the past for various other projects and boreholes were placed using several methods and they reach to various depths.

The reviews entailed, collection of data from the various sources, validate and homogenise the data and enter the same in a database.

Parameters derived from the database were further compressed and exported for the GIS team of the Rotterdam Port Authority to prepare theme maps showing the geographical distribution and quality of the available material for reclamation.

The data included cone penetration test results, boreholes, particle size analysis, bathymetric survey data and pictures.

Client

Havenbedrijf Rotterdam nv

Location

The Netherlands

Year

2004 - 2005

Services

- Borrow area assessment
- Validation of data
- GIS themes



Herbarenerf 7
2743 HA Waddinxveen
The Netherlands

Tel +31 182 546798
Fax +31 182 546802

E-mail demasnl@demas.nl
Web www.demas.nl